

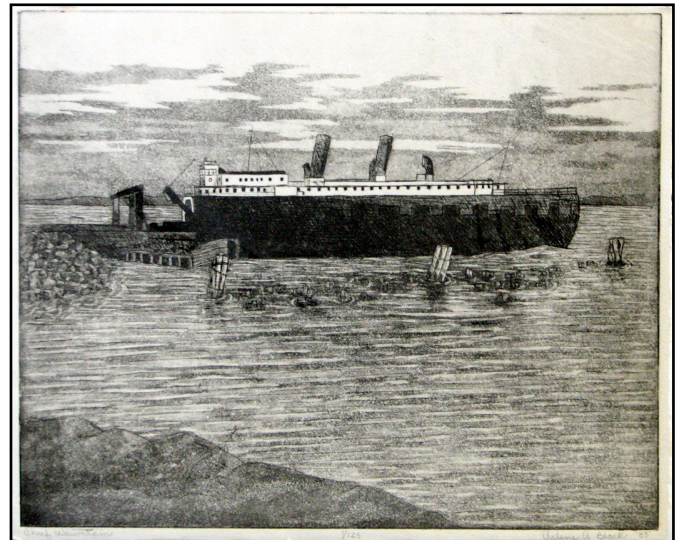


THE INTERNATIONAL BRIDGE SAULT STE. MARIE, MICHIGAN AND CANADA

Laura Davidson, "International Bridge". This print is one in a set of six bridges that make up a limited edition homage to bridges by Laura Davidson. The bridges are the Zakim, Congress and Northern Avenue Bridge in Boston, The Brooklyn Bridge in New York, the Mackinac Bridge in Michigan and the International Bridge connecting Sault Ste. Marie Michigan and Ontario. The images are two color linoleum block prints on rice paper, hand printed during 2013-14 on an antique Kelton Press in the artist's studio. More information at: http://www.lauradavidson.com/w_almosthome1.html



Marion Strahl Boyer, "Ice Breaking", #2/25, signed woodcut.



Arlene A. Black, "Chief Wawatam". Print—Artist's proof (1/25). Unframed.



Above center: Photograph of the *Cliff's Victory*".

Above, framed poster of "A Celebration of the Upper Peninsula as Home". Bonifas Arts Center, Marquette & Alberta House, 2007.



Set of 11 vintage Chinese woodcuts ready for matting and framing—cover and three of the wood cuts are at left.



Left, Framed and signed poster for Kyung Hatfield Retrospective Exhibit

Gumball Machine IV, by TR Colletta, oak framed reproduction

Far right, *Red Cana* by Georgia O'keefe, oak framed reproduction



Olive Craig Gallery
Invites you to an Invitational
Retrospective Exhibit of
Kyung Hatfield

1st February to 3rd March 2007

Public Reception • Saturday 17th February 2007 • 1 pm to 4 pm

Saudi Arts Centre • Alberta House
217 Ferris Street • Saudi Square, Madinat Al-Ras
www.saudiarts.org • 966-635-1316



Left, *Homage to Tom Thompson*, oil painting by Kyung Hatfield (31: x 37")

Rt., *Gerald D. Neville*, print by Jeanne Tubman





Left, *Last Voyage to Whitefish Bay (Mackinac)*, print by **Jeanne Tubman**

Rt., Original watercolor by **Pat Norton**, *Freighter Passing Island*

Below left, Original signed serigraph #8, *Sault Ste. Marie*, circa 1865, by **Robert E. Bishop**

Below rt., original transparent watercolor by **Toni Leni**, *Visit to the Island*

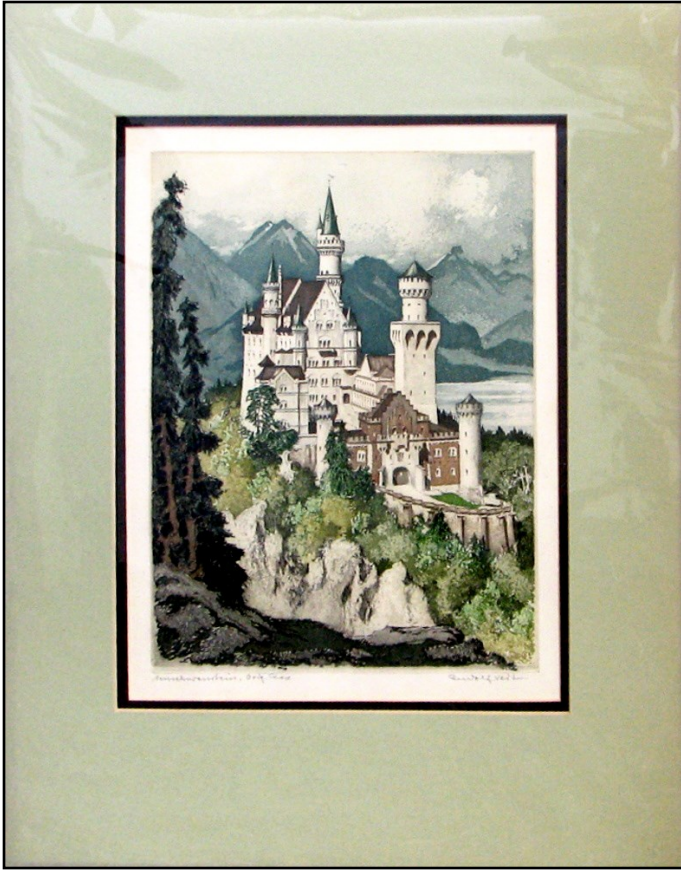




Above left, original watercolor by **Ellen Hadath**, (12 x 16") Above rt., original watercolor by **Tedi Selke** Below left, original watercolor by **Pat Norton**

Below left, original pastel by **Maureen Mousley**





Original watercolor and pen and ink by **Rudolph Veit** of
Neuschwanstein Castle (Bavaria)